

2nd Generation Enhancements

- Sliding patient surface for easier expansion/retraction to 54" width
- Fold Down Foot Rails
- Plexiglas Windowed, Rotating Head Rails
- Narrower Frame for improved doorway clearance
- 1 Button Trendelenberg functions
- Improved Trapeze efficiency with enhanced patient access
- New, *Streamlined* Dual Passage Assist
- Impulse Drive System



Available in Oasis Beige

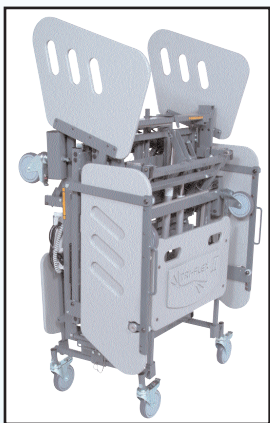


{ Plexiglas
 Windowed
 Head Rails
 Standard



Bariatric Bed

Shown with options



With all the excellent features of the original Tri-Flex

- ❖ 1,000 lb. Capacity - Static & Transfer
- ❖ 2 Patient Surface Widths in One Frame
- ❖ 3 Piece Interchangeable Width Mattress
- ❖ "Fold & Roll" One Person Delivery System
- ❖ Integrated Scale System Option
- ❖ Exit/Enter at Foot of Bed Option

MULTIPLE FEATURE HIGH PERFORMANCE PLATFORM



MULTIPLE FEATURE, HIGH PERFORMANCE BARIATRIC PLATFORM

	<p>Durable Molded Reinforced Plastic Head and Foot Boards</p>		<p><i>Compact, "Fold & Roll", 1 Person Delivery System</i></p>
	<p>Easiest to use Menu Driven Interface Scale</p>	<p>Patient Surface Width Panel Extends To 48" or 54"</p>	<p><i>"Fold & Roll" Dimensions</i> Width - 32" Height - 74 1/2" Length - 46 1/2" <i>(Hand Rail to Hand Rail)</i></p>
	<p>Load Cells - Specifically Positioned For The Most Accurate Bed Scale System</p>		

Features _____ Specifications _____

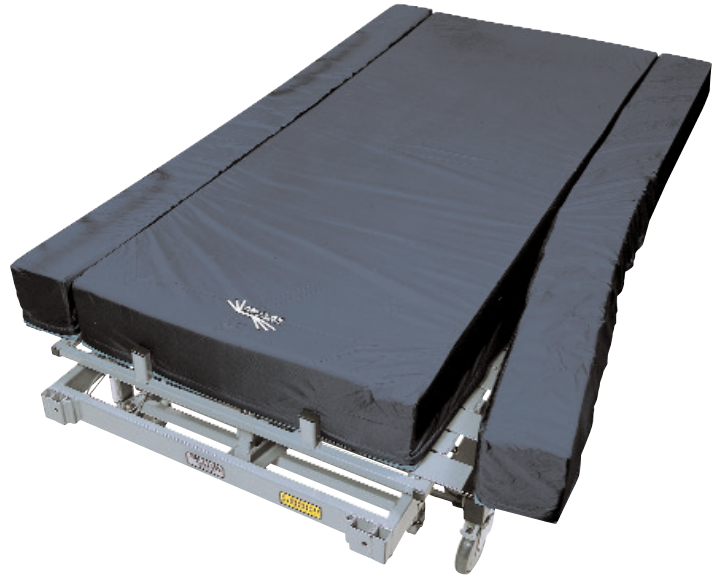
- **Multiple Positions:**
 - Trendelenberg / Reverse Trendelenberg
 - Hi-Lo: 14" to 28"
 - Cardiac Chair Positioning
 - Independent Head & Knee Positioning
- **Integrated Scale System**
- **Compact "Fold & Roll"** 1 person delivery system
- **3 Widths in 1 Frame** 37" to 48" or 54"
easy slide, expand/contract
- **3 & 4 Corner Trapeze Frame Setup**
- **Impulse Drive System**
- **Attendant Control**
- **Angle Indicators**
- **Battery Back-Up**
- **CPR Release Mechanism**
- **Easy Patient Egress at Foot or Side of Bed**

- ◆ **Dimensions**
 - Platform:** 37" Width x 86" Length
48" Width x 86" Length
54" Width x 86" Length
 - Frame:** 93 7/8" Long
40 3/4" Wide Caster to Caster
- ◆ **Class:** Fully Electric: Modular Electronics
37" Patient Surface Width for Transport
48" Patient Surface Width for in room use
54" Patient Surface Width for in room use
UL 60601-1 / IEC 60601-2-38 and CE Mark
- ◆ **Capacity:** 1000 lbs.
- ◆ **Misc:** Hospital Grade Plug
Low Voltage/High Efficiency
(Low Power Consumption 1.6 amps)
Heavy Duty 6" x 1 1/4" Steer & Lock Casters

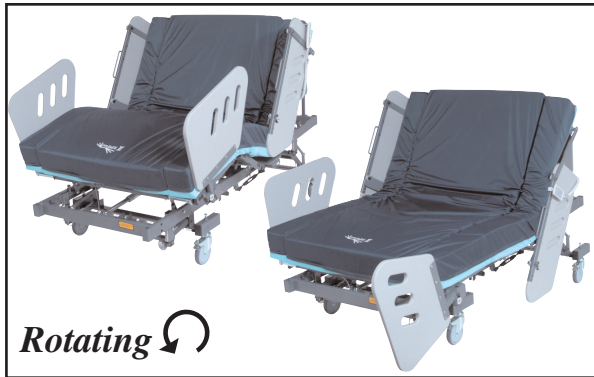
NEW & IMPROVED FEATURES

Sliding ----->
Expanding/Retracting <-----
-----> "Lock In" Surface

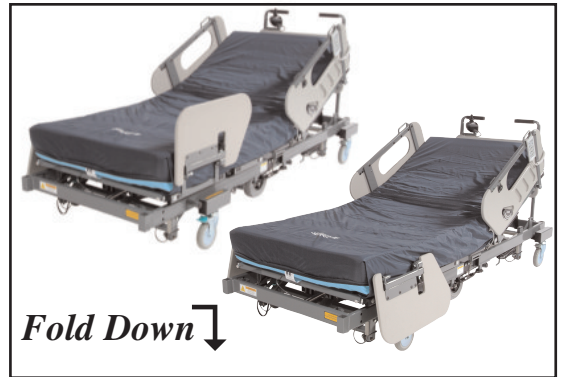
**Accompanying Interchangeable
Mattress Width**



Rotating and Fold Down Foot Side Rails



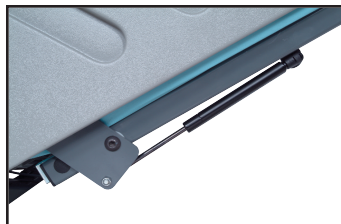
Bed opens
completely
without
having to
remove side
rails.



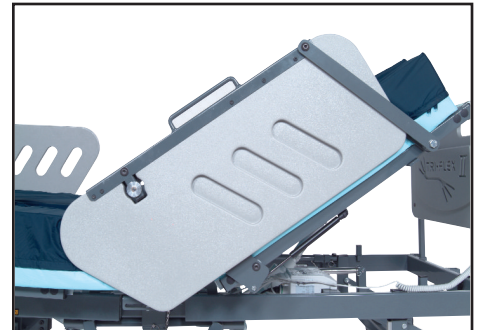
Both types of foot rails designed to UL 60601-1 / IEC 60601-2-38 Standards.



Rotating Head Rails



Head rails lower & raise
easily with added
support device



Strength + Durability

Easy Patient Egress



EASIER SAFER DOWNWARD TRANSFERS

The ultra low 14” deck height provides easier, safer into bed downward transfers for classic, short morbid obese patients.

The *Tri-Flex II* Deck is a “critical” 5” lower than the 19” deck of many bariatric beds, yet has the ability to adjust to a 28” deck height providing a safer, easier out of bed downward transfer for the taller patient as well.

Help your patient In and Out of the Foot of the Bed with the **Dual Passage Assist** option. Designed specifically for the *Burke Tri-Flex II*, this unique system enhancement provides the option of exiting or entering the bed through the foot end, encouraging greater patient mobility.

STREAMLINED

DUAL PASSAGE ASSIST OPTION



NEW & IMPROVED FEATURES

Maximum Support and Transfer Capacity: 1000 lbs.

IMPROVED TRAPEZE OPTION

GREATER PATIENT ACCESS



**3 & 4
Corner
Setup**

Tri-Flex II provides smooth, safe transport of patients up to and including 1,000 lbs. Designed specifically for the maximum in stability and safety, providing dependable support to both patient and staff.



New Impulse Drive Reduces Bariatric Care Injuries

- **Safer for staff** - reduce need for dangerous transfers and expensive cumbersome lifts.
- **Save staff time** - no combing the facility for 4-6 nurses to move a 1,000 lb. patient and bed through the facility or risk injury transferring to wheelchair.
- **Improve staff morale.** Reducing the number of transfers means you reduce the threat of career ending injuries and improve nursing staff morale in your bariatric unit.
- **Part of Emergency Evacuation Plan.** Only one person is needed to move patient



Burke Tri-Flex II Impulse Drive System

Safe and Easy Maneuverability through Variable Acceleration & Positioning

- ➔ Able to make small positioning corrections in the room with ease.
- ➔ Moves bed down the hall at a walking pace or less at driver's discretion.
- ➔ Will stop immediately yet gently by removing thumb/finger pressure off the joy stick.
- ➔ Easily maneuvers in and out of doorways, elevators, turns, etc.

Push Handles



Push handles - Well positioned for optimum ease of use. Foam covered for a comfortable and safe grip. Affords less strain and effort for care givers while positioning or moving the bed. Also included with the Impulse Drive System.

Angle Indicators



Angle Indicators - Easy to read and self setting - shows the degree of angle of the head gatch for recording levels of patient comfort relating to upper body positioning.

DO YOUR HOSPITAL BEDS MEET THE FEDERAL REGULATIONS?

FEDERAL REGULATIONS REQUIRE INDEPENDENT TESTING/LISTING TO THE IEC60601-2-38 FOR ELECTRIC HOSPITAL BEDS

Many hospital administrators are unaware that all beds in their facility, including bariatric beds should meet the IEC 60601-2-38(2-38) U.S. electric hospital bed standard. The 2-38 is the first and only standard ever developed to specifically test the safety and effectiveness of electric hospital beds. The Occupational Safety and Health Administration (OSHA) requires that any new hospital bed used in a hospital, nursing home or any public facility be tested to meet the 2-38 standard by a nationally recognized testing laboratory (NRTL), such as UL, ETL or CSA. The NRTL 2-38 standard certification mark must be placed on the bed. For many years, the Food and Drug Administration has used the 2-38 as the recognized consensus standard for testing all electric hospital beds, defining the minimum allowable construction and performance requirements.

A bed's failure to meet the 2-38 standard raises questions of patient and staff safety as well as creating additional issues of product liability for the facility. Some bed manufacturers are currently claiming listings to invalid standards that are unacceptable to use in place of the 2-38. One current practice is placing a confusing UL label on the bed without listing the standard to which it was tested.

Any incident involving a non 2-38 NRTL tested bed puts your facility at greater liability risk. The following numbers demonstrate some of the incidents facilities are currently encountering. The FDA's website reports 116 deaths by side rail entrapment, 12 bed fire incidents and 8 possible deaths by fire since 2002. In addition, there have been multiple bed recalls including one recall of over 200,000 beds for potential fires. The vast majority of these incidents involve beds that were not tested to the 2-38 standard. Protect your facility by requesting a certification letter issued by the NRTL, for any new bariatric bed rented or purchased for your facility. The letter should specifically state that the bed was tested and meets the IEC 60601-2-38 U.S. electric hospital bed standard.

Burke, Inc. has been specializing in bariatric bed frames since 1979.